

THE BENTLEY
BUGLE



COMMUNITY & CHURCH NEWS



ISSUE 95 OCTOBER - NOVEMBER 2023

LOCAL TRADE DIRECTORY

Please mention The Bentley Bugle when responding to Adverts



S.A. PRIOR
BUILDERS

A Company That Cares
Mob: 07885 350722
100 The Street Capel St. Mary
Ipswich IP9 2EQ
saprior68@icloud.com

CAPEL STATION GARAGE

MOT's - Class 1, 2, 3, 4 & 7
Servicing & Repairs
Tel: 01473 730002 or 730033
Fax: 01473 730269
Old Station Yard, Bentley Hall Road
Capel St Mary, Ipswich, IP9 2JL

Mobile Foot Care Practitioner



Foot Health Check & Advice
Nail Trimming
Callus (Hard skin)
Cracked Heels
Corns
Verrucas
Fungal & Thickening Nails
Ingrown Toenail
Athletes Foot

07900541421
carrieg@btconnect.com

NELSON POTTER
QUALITY FENCING
& GARDEN BUILDINGS

Fence Panels, Trellis, Willow Panels,
Post & Rails, Poles, Stakes, Wire
Netting, Sheds & Summerhouses

Local Deliveries £5
TEL: 01473 311905
Dodnash, Bergholt Road, Bentley IP9 2DQ
www.nelsonpotter.co.uk

CHARLIE'S CHIPPY

**Sadly we will not be coming to Bentley again until
March 2024 due to other commitments.**

See you in the New Year!

Charles Pearson

PLEASE SUPPORT YOUR LOCAL TRADERS

THE BENTLEY BUGLE - COMMUNITY AND CHURCH NEWS COORDINATORS

Editors - Marianne Munday (Production) & Christine Campbell (Copy)

Email: mariannemunday63@gmail.com Copy to: christine.bugle@gmail.com

39 Silver Leys, Bentley, IP9 2BS

Tel: 07808 259331

Advertising/Treasurer - Peter Day - Email: peter.d47@hotmail.co.uk

Greenacres, Capel Road, Bentley, IP9 2BL

Tel: 01473 310518

Distribution - Jane Day - Email: jane.d53@hotmail.co.uk

Greenacres, Capel Road, Bentley, IP9 2BL

Tel: 01473 310518

Church Correspondent - Sandra Mehen -Email: [sandramehen@gmail.com](mailto:sandranehen@gmail.com)

19 The Link, Bentley

Tel: 01473 310383

The Bentley Bugle is published and distributed bi-monthly on a voluntary basis for the benefit of the local Village and Church community.

Information is published in good faith and we reserve the right to edit copy submitted.

Errors and exceptions are regretted.

Advertising in these pages does not constitute a recommendation.

Front cover - Whitethroat by Michael Bamford

If you have any suitable photos for future issues, please forward to Christine at christine.bugle@gmail.com

COPY FOR THE DECEMBER 2023 - JANUARY 2024 ISSUE SHOULD REACH **CHRISTINE BY NOON ON WEDNESDAY 22 NOVEMBER 2023**. Copy can be submitted either on paper or electronically (preferred). Please try to ensure that any copy submitted electronically is in a standard format e.g. .doc, .docx, txt, .jpg, .png, or .pdf and the preferred font is Arial 14pt. Many thanks.

Bentley Directory

PARISH, DISTRICT AND COUNTY COUNCILS

Parish Council - Chair	Marianne Munday	07808 259331
Parish Council - Clerk	Joy Scott	01206 298174
Babergh District Councillor	David Busby	07855 777147
County Councillor	Georgia Hall	07955 434445

BENTLEY ORGANISATIONS AND CLUBS

Bentley Primary School (Headteacher)	Jo Austin	01473 310253
(Chair Governors)	Simon Hurst simon.hurst@copdock.suffolk.sch.uk	
(Chair PTA)	Sarah Hawley	07894 294319
Bentley Community Pub	Kate Spicer	01473 314187
Bentley Comrades	Ray Savage	01473 311122
Bentley Community Stores	Bob Feltwell	01473 310182
Bowls Club	Lillian Calvert	01473 808652
Carpet Bowls	Jill Mills	01473 311103
Case Book Group	Jane Lockwood	01473 311797
Footpath Society	John Wheals	01473 310569
Footpath Warden	Tim Hamstead	07748 821594
Friends of St Mary's	Bob Feltwell	01473 310735
Horticultural Society	Stewart Rowe	01473 311994
Link Lunch Group	Veronica Howe	01473 310344
Maritime Football Club	Jon Haines	08442 023130
Parent and Toddler Group	Pam Rayment	07970 741581
Recorders	Moira Usher	01473 310322
Scrabble Club	Robin Owen	01473 311844
Tree Warden	Colin Hawes	01473 310678
Tuesday Club	Veronica Howe	01473 310344
	Catherine Sweeney	01473 310095
Village Hall - Bookings	Veronica Howe	01473 310344
	Mark Usher	01473 310322
Village History Recorder	Nicky Moxey	01473 313125
Whist Club	Veronica Howe	01473 310344
Womens Institute	Sandra Ford	01473 310072

ST MARY'S CHURCH, BENTLEY

Rector	IN VACANCY	
Benefice Administrator	Michelle Jowers	07955 329341
Benefice email address	constablecountrychurches@outlook.com	
Churchwarden	Peter Day	01473 310518
Assistant Priest	Revd Don Mehen	01473 310383

BENTLEY BAPTIST CHURCH ADMIN

07814 465222

Bentley Parish Council website - <http://bentleysuffolkparishcouncil.gov.uk/>

Bentley (in Suffolk) Community Facebook page - <https://www.facebook.com/groups/292599697915731/>

Other village websites are listed in the publication.

Parish Diary

OCTOBER 20234

- 4th & 18th - Craft Group - Case is Altered at 7.00 pm
- 4th & 18th - Whist Drive - Village Hall from 7.30-9.00 pm
- 4th - Comrades - Village Hall Committee Room at 7.30 pm
- 5th - Parish Council Meeting - Village Hall at 7.30 pm
- 7th - Bentley Church Quiz - Village Hall at 7.00 pm
- 10th & 24th - Tuesday Club - Village Hall at 2.30 pm
- 11th - Bentley Bluebells WI - Village Hall at 7.30 pm
- 12th & 26th - Scrabble Club - Village Hall Committee Room at 2.30 pm
- 12th - Open Mic Night - Case is Altered at 8.00 pm
- 14th - Johnny Cash Tribute Band - St Mary's Church at 2.30 pm
- 19th - Link Lunch - Village Hall at 12.00 & 12.30 pm
- 20th - Bentley Horticultural Society - Village Hall at 7.30 pm
- 21st - Footpath Society Walk - from the Village Hall at 2.30 pm
- 26th - Book Group - Case is Altered at 7.30 pm
- 28th - Monthly Quiz - Case is Altered - at 8.00 pm

NOVEMBER 2023

- 1st & 15th - Craft Group - Case is Altered at 7.00 pm
- 1st & 15th - Whist Drive - Village Hall from 7.30-9.00 pm
- 1st - Comrades - Village Hall Committee Room at 7.30 pm
- 2nd - Parish Council Meeting - Village Hall at 7.30 pm
- 7th & 21st - Tuesday Club - Village Hall at 2.30 pm
- 8th - Bentley Bluebells WI - Village Hall at 7.30 pm
- 9th - Open Mic Night - Case is Altered at 7.00 pm
- 9th & 23rd - Scrabble Club - Village Hall Committee Room at 2.30 pm
- 16th - Link Lunch - Village Hall at 12.00 & 12.30 pm
- 17th - Bentley Horticultural Society AGM - Village Hall at 7.30 pm
- 18th - Footpath Society Walk - from the Village Hall at 10.30 am
- 23rd - Book Group - Case is Altered at 7.30 pm
- 25th - Monthly Quiz - Case is Altered at 8.00 pm

Other Activities in the Village

- Toddler Group - Mon & Weds 9.30 am to 12 noon (Term Time only) - Village Hall
- Holistic Yoga - Every Mon 7.30 - 10.00 pm - Village Hall
- Aerobics Class - Tuesday 9.45 am (Term Time only) - Village Hall
- Pilates Class - Tuesday 11.00 am to noon (Term Time only) - Village Hall (contact Jill Sharp for information - 01473 311546)
- Carpet Bowls - Every Tues 7.30 pm & Weds 2.30 pm - Village Hall
- Ballroom & Latin Dance Class - Thurs 6.30 - Village Hall - email grove2209@gmail.com

BENTLEY VILLAGE AT CHURCH NEWS

SERVICES IN BENTLEY CHURCH

To encourage congregations to mix and get to know each other within the newly formed Constable Country Churches Grouping the four churches (Bentley, Brantham, East Bergholt and Tattingstone) rotated our services so that only one service took place in each church during August. Since September 1st we are all reverting back to our normal weekly pattern.

SERVICES IN OCTOBER

Sunday 1 st October	Holy Communion	10 am
Sunday 8 th October	Morning Worship	10 am
Sunday 15 th October	Holy Communion	10 am
Sunday 22 nd October	Family Service	10 am
Sunday 29 th October	Bereavement Service	5 pm

BEREAVEMENT SERVICE

Last year we held our very much appreciated outdoor service for those who wished to remember loved ones. This year the service will be on Sunday 29th October starting at 5pm and will be an opportunity to light candles and hang names of our loved ones on a special tree which will be lit. All are welcome.

SERVICES IN NOVEMBER

Sunday 5 th November	Holy Communion	10 am
Sunday 12 th November	Remembrance Service	10:50 am at the War Memorial
Sunday 19 th November	Holy Communion	10 am
Sunday 26 th November	Family Service	10 am

Lonely? Need a Listening Ear?

Do you know of anyone in the village who would like a visit at home or in hospital? Would you like someone to visit you? Would you like someone to talk to, pray with you or for you? Please call Doreen on 311122; Carolyn on 311090; Jane 310518 or Sandra 310383. We are here to listen and help when needed.

SUPPORTING BENTLEY CHURCH

St Mary's Church Bentley has been at the centre of Bentley life for over 700 years. Generations have worshipped and found it a place of refuge, reflection and joy. Please come to join us for some of our services and stay for a chat and refreshments afterwards. Help us ensure that St Mary's Church stands for another 700 years. It costs about £300 a week to keep this beautiful and historic church open. One way to support us is by giving via this QR code using your smartphone. There is also one in the church building. Thank you for your continued support which means a great deal to us and to maintaining the church in our village.



BENTLEY CHURCH QUIZ NIGHT

You can have fun and support our beautiful church so please join us at our annual Quiz Night on **Saturday 7th October**. We will start promptly at 7pm. Tickets are £7 each which includes a ploughman's supper. Teams can be of 4-6 and can be made up on the night. Don't forget to think of a really good name for your team. There will also be a bar and a draw. Don't miss out on a fun evening with a bit of a challenge. Contact sandramehen@gmail.com or phone 01473 310383 for tickets.

CHRISTMAS AT BENTLEY CHURCH

We are planning on decorating St Mary's for Christmas in time for the Christingle Service on Sunday 10th December. If you would like to help with the decorating you would be very welcome. We will be at church on **Monday 4th, Wednesday 6th and Thursday 7th from 10am** so please come and join us if you can.

JOHNNY CASH TRIBUTE BAND

For all those who enjoyed the Johnny Cash Tribute Band in June there is another opportunity to hear them and take a trip down memory lane, on **14th October at 2.30pm** in Bentley Church. Tickets are £12 per person and can be bought from Peter Day by phone on 01473 310518 or mobile 07570 103005.

WEST VILLA

Very many thanks for your continuing support for West Villa with donations of bedding and towels that we continue to receive and deliver. We collected tins and packets of food for West Villa at our Harvest service as our harvest offering for those in need. Thank you for the tins and packets of food brought to the Harvest Service which we delivered to West Villa.

DATES FOR YOUR DIARY

As we come up to a very busy time of year, don't miss out on some very special services at a time of celebration.

- Christingle Service Sunday 10th December 10am
- Nine Lessons and Carols Sunday 17th December 10am
- Crib Service Sunday 24th December 3pm
- Christmas Day Communion Sunday 25th December 10am

JUST A THOUGHT

We are very lucky to live in Bentley. It is a welcoming village and there is lots going on, with activities, events and outings to please most people. We have a village hall that is well equipped, a good primary school and a village shop run by volunteers. All ages are catered for from a toddler group up. There is something for everyone. We also have a beautiful church where we can find comfort and acceptance. We have no need to feel lonely or left out.

One of my favourite hymns has this verse, which is very comforting.

"We are pilgrims on a journey; Fellow travellers on the road
We are here to help each other walk the mile and bear the load."

If we trust in God we will never be alone.

Church Contact Details for weddings, baptisms and funerals or other queries

Church Warden – Peter Day - 310518

Assistant Priest – Rev Don Mehen – 310383

Treasurer – Ken Felgate - k.felgate108@btinternet.com

PCC Lay Chair – Jane Day – 01473 310518

PCC Secretary – Sandra Mehen – 01473 310383

BENTLEY CARPET BOWLS

The final five matches of the summer league fixtures saw us play four away and the last match at home. Against Hintlesham we came very close to getting a result losing one mat by one shot and other by two shots but in the end result was a loss 2-8.

Harkstead got their revenge in the next match by thumping us 1-9. We wish them well in the first division next year. At Chelmondiston although we got close in two games we still lost by the usual score 0-10.

Our last away match saw us struggle once again at Copdock losing 0-10. The last game against Hintlesham at home was very close with us eventually winning 6-4 it could have easily been more but for Frank the smiling assassin. We are now looking forward to playing second division after our recent relegation.

Hopefully we will win a few more matches.

David Howe

LINK LUNCH

The Link Lunches will be starting again on Thursday 19th October and Thursday 16th November at 12.00 and 12.30pm in the Village Hall at the same price of £6.00 for a two course meal followed by tea and coffee. Tickets from Veronica on 01473 310344.

Veronica Howe

BENTLEY BLUEBELLS WI

Autumn is fast approaching and we are making plans to repair and improve our gardens for next year. Our speaker for September Sonia Bennett, was most informative about plants for areas that are dry or sheltered and how we can learn from dry gardens abroad how to approach planting in our increasingly hot dry situations. At our October meeting on the 11th our speaker is Sarah Bennett on being a professional golfer. As usual we are at the village hall at 7.30 if you wish to join us. Looking ahead we have Christmas Surprises, Drum and Brass and our Christmas dinner to look forward to.

Finally, we would like to say a big thank you to everyone who made cakes for our refreshment stall at the village show. So generous and delicious!

Theresa Bloomfield

BENTLEY BOWLS CLUB

Our season has now ended - all too soon - we finished mid table in the Samford and Triples Leagues, so will stay in the same divisions next season. For a small village club we do well against some of the bigger teams in the Ipswich area.

Our Club competitions have been completed and we saw some fine bowling when we had our finals day. Barry Ford won the mens two woods with David Howe runner up. David won the open fours with Colin Rose runner up. The pairs competition was won by Ken Scoulding and Bill Slegg and the Triples competition by Lillian Calvert, Ken Scoulding and Bill Slegg.

We have started with the maintenance of the green with members hollow tining, scarifying, sanding and seeding and spreading top soil to level. This work should keep a good running surface next season. We are still looking for new members, so do think about coming to join us. We will start again next April.

Lillian Calvert Secretary 01473 808652

BENTLEY (SUFFOLK) HORTICULTURAL SOCIETY

Our Annual Show was held on Saturday 19 August in the Village Hall.

Thank you to all who made it such a good show.

The following is a list of the Cup winners.

South View Cup	Flowers	- Dorna Owen
Mills Cup	Pot plant in Bloom, In door foliage plant and a vase of grasses.	- Colin Rose
Carruthers Cup	Annual competition plan - Fuchsia	- Colin Rose
Farmers Cup	Vegetables, Herb and longest runner bean	- Barry Ford
Jensen Cup	Fruit	- Bob Mawkes
Booth Cup	Floral Art	- Emma Finney-Hewitson
Saward Cup	Domestic	- Emma Finney-Hewitson
Arnold Cup	Best in Show (Dahlias)	- Sandra Ford
Presidents Shield	Highest points total	- Dorna Owen

Well done to these winners

Our Monthly meetings will resume in September. Anyone who would like to see what we do is welcome to the September and October meetings free of charge.

The speaker for the meeting on 20 October is Sonya Burrows. Subject 'Do plants wear coats'. The AGM is on November 17 (obviously members only).

Pam Lovell

TUESDAY CLUB

It seems the weeks are flying by, we are almost coming to the end of September and dark evenings. Once again we have had a a packed programme with talks and entertainment. Frazier put us through our paces with Chair Aerobics and games. Mr Smooth sang a selection of songs and we had Gary from the Rural Coffee Shop, who brought us up to date with all the latest information on what is available in the way of help and support. On the 12th September we had our second outing of the year. Our members were taken to the Esplanade Hotel in Clacton, by coach. We had a lovely lunch and was serenaded by the Hotel Singer, we finished off the afternoon with cream scones and tea.

During the coming weeks the club will welcome Peter Finch and his Ukulele, the Phoenix Bell Ringers will be back and Frazier will be holding the last session of Chair Aerobics for this year. Finally we have Ross Rumbold who will talk about the work of Ipswich Hedgehog Rescue Service.

Please feel free to come along and join us. **Catherine Sweeney, Secretary.**

NEWS FROM BENTLEY & COPDOCK PRIMARY SCHOOLS



Bentley Primary 01473 310253
admin@bentley.suffolk.sch.uk

Copdock Primary 01473 730337
admin@copdock.suffolk.sch.uk

<http://www.bentleycopdock.co.uk/>




We were excited to welcome our new intake of Reception children in September along with some other new children to other year groups, as well as a new member of staff to our school family. Everyone settled in to the new term very well and all looked smart in their new uniforms.

We had a busy start to term celebrating National Fitness Day, and Languages Day. Children and staff attended Bentley Church for our annual Harvest Festival and we supported Macmillan Coffee afternoon – serving delicious cakes and refreshments to our families whilst the children performed some songs they had learned at the start of term.

Our Year 5 and 6 children had an exciting visit to Suffolk One to have a tour and take part in a Dance Workshop. We ended the first half term of term with Activity Week where all children took part in gymnastics, sailing and lots of general sporting activities.

We will be starting the second half of term in November with Christmas Cake Club ready for the festivities next month and some exciting trips and sporting events are being planned.



Top Timbre Productions
Proudly presents

The Fabulous

**CASH &
CARTER**
Show

THE BEST OF JOHNNY CASH AND JUNE CARTER

SAT OCTOBER 14th
Doors open 2.30pm

St Mary's Church Bentley

IP9 2DP

Tickets £12

Mobile: 07570 103005

Email: peter.d47@hotmail.co.uk

BENTLEY STORES

Did you know ?

There are many mysteries about what a Village shop sells? Especially run by volunteers!

In Bentley Stores you are in for a pleasant surprise as our buyers are really good and make sure you have an excellent variety of things from well known brands at reasonable prices.

As we are on your doorstep why not give us a try?

You can pay with cash, card, watches or phones!

Gluten Free Shelf

We have always supplied gluten free products but we now have a dedicated shelf which includes Sesame Snaps, Triple Chocolate All Butter Cookies, LazyDay Salted Caramel Crispies, Schwartz Jaffa Cakes, Mrs Crimbles Big Chocolate Macaroons and Big Coconut Macaroons, and French Madeleine's, White Chocolate & Cranberry All Butter Cookies, Flapjack, Tiffin and Rocky Road.

Laundry & Dry Cleaning

If you drop off items for cleaning by Monday 1.30 they will be back by 9 am Thursday !

We use local Press Gang from Hadleigh

Country Pies from Capel St Mary

We have Large and Small Pies, Sausage Rolls, Gala Pie, Tartlets, all fresh and in the Freezer.

Frozen foods

Our large freezer usually has various Pizzas, local Mince and Sausages, Birds Eye Peas, Beans,

Aunt Bessie's Chips, Roasties and Yorkshires.

Linda McCartney products

And for dessert....Blueberries, Raspberries, Nectarine and Peach slices, Carte d'or and Mackies Ice Cream

Over the counter Medication

We usually have Paracetamol, Ibruprofen, Nurofen, Anadin Extra, Asprin Dispersible, Fishermen's Friends, Locketts, Hayfever and Allergy Relief, Antihistamine, Lemsip, Plasters, Gaviscon, Rennie's, Calpol, Anthisan Sting Relief, Diarrhoea Relief, Germolene, Lypsyl, Halls Soothers, Strepsils,

Opening Hours,7 days a week!

Weekdays 9 to 1.30

Saturdays 9 to 12 noon, Sundays 9 to 11

**If you would like to volunteer, it is fun and rewarding,
please pop in and ask or email info@bentleystores.co.uk**

WILDLIFE NOTES

Bentley Barn Owls

Of the five species of owl which breed in Britain the barn owl is becoming much less common generally - and in some places, rare. A recent report suggested that there might be between 4,000 - 5,000 pairs of barn owls living in the British Isles.

The barn owl is very distinctive. It has a body length of up to 36cm (14") and has handsome buff-coloured plumage mottled with grey on the upper parts of the body and wings. The heart-shaped head and the underparts of the barn owl are white. They have large eyes and, as with all owls, the head can be turned 180 to permit the bird to look directly backwards.

Barn owls hunt over open fields, generally within a range of a kilometre from their roosting or nesting site. As well as its good eyesight, the barn owl has extremely sensitive hearing, to help it hunt.

Barn owls consume huge numbers of the rodents that are often considered a pest by humans.



Photo by John Boyle

The local farmer, Don Baker, has left corners and wide margins of fields to naturalise and create the right habitat of varied long tussocky grassland for the short tailed voles and small mammals the owls feed on. He also keeps woodland open and encourages ground cover for the owls to hunt through. They hunt mostly at night, but when feeding young they hunt in daylight as well, away from human disturbance.

They nest in undisturbed farm buildings, old trees and high owl boxes on trees and poles. The important thing about having successful breeding owls is lack of human disturbance.

Breeding may start as early as February or March, with up to seven eggs being laid in a clutch depending on the availability of food. Barn owls have relatively large broods and the chicks have a fast growth rate. The eggs hatch in about four weeks, during which time the male feeds the female on the nest. Baby owls can fly by the time they are ten weeks old. However, the chicks have relatively low probability of surviving into adulthood.

WILDLIFE NOTES

Although Barn owls can live for over 20 years in captivity, the risks to wild birds mean that only two thirds to three quarters of all adult barn owls in the UK survive from one year to the next. Their average life expectancy overall is only 4 years.

The Bentley owls are weighed, measured, sexed, ringed and recorded by licensed handlers every year, on three sites in the parish . One that was bred in Bentley was found dead on the road down at Dovercourt, roads being a real hazard for them.

The decline of the barn owl and the increasing threat to its future survival can be traced to several causes. Probably the most serious problem for the species is finding a suitable nesting site, as many of the old type barn buildings have been replaced by modern structures which do not offer the same opportunities for nesting. Modern churches too leave a great deal to be desired from the owl's point of view, while the elm tree so favoured by barn owls is itself a threatened species thanks to Dutch Elm disease.

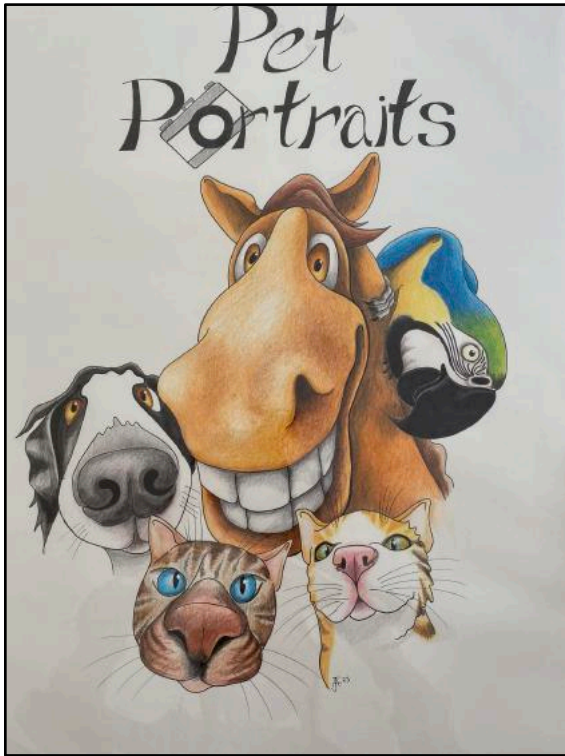
Some barn owls are illegally taken and sold to collectors even though the species is protected under the Wildlife and Countryside Act. Egg collectors too are a serious threat.

Many barn owls die each year as a result of swooping low and flying into oncoming traffic and others consume rodents which have eaten poison, which can cause the owl's embryos to die inside the eggs.

We are lucky to have Barn Owls thriving in Bentley and thank the local landowners for their efforts to help protect this beautiful bird. Thanks to Sheila Baker for the photo and information for the article. Marianne Munday



For more information see www.barnowltrust.org.uk/barn-owl-facts/ and www.ypte.org.uk/factsheets/owl-barn/overview



Come and join us at the **MacMillan Coffee Morning** on **Saturday 30th September** at the **Case is Altered** from **10am - 2 pm** and **bring your pets!**

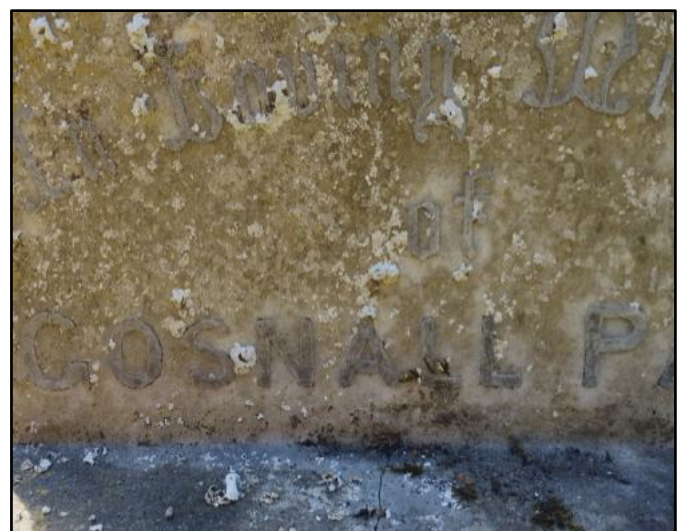
John Boyle, local photographer, will be on hand to take digital photographs of you and your pets in exchange for a contribution to Macmillan Cancer Support. You will be given the digital images for you to print.

Grave Discoveries

If you see people armed with chalk, tracing papers, cameras bustling about the old part of the church graveyard - don't worry! A small number of volunteers are working to read our ancient gravestones before they become illegible. We have some interesting people in there - Gosnall is an old Suffolk name, indeed an Anglo-Saxon one. They didn't all stay here; the first colony in America, Jamestown, was founded by the Virginia

Company of London, and one Bartholomew Gosnall. The colony failed, rather spectacularly, sadly. Our Gosnalls are rather later, but still a thrill to find! Other names are more usual, but the stories are sadder...

Nicky Moxey, Village History Recorder



NOTES FROM THE CASE



Suffolk's first Co-operative Pub!

Tel: 01473 805575

<http://www.thecasepubbentley.co.uk/>

<https://www.facebook.com/TheCaseBentley/>

email: chair@thecasepubbentley.co.uk



After such a disappointing August (weather wise) and a rather hot few weeks of a September Indian summer, it now feels as if autumn is approaching fast. Hopefully the mildish weather will last a little longer and we can continue to make good use of our lovely garden. Having said that, we are now counting down to Christmas but before this we do have a few events happening during the next few months to keep us busy.

Open Mic Nights

Open Mic Nights continue to attract guests and performers from near and far afield. The next two dates for your diary are **Thursday 12 October** and **Thursday 9 November**. **Music starts 8pm**. As always PA is provided, all performers welcome! For further enquires please contact Dave on 07885 963882 or look on our website or Facebook page.

Quiz Nights

As always our monthly quiz nights are a firm favourite with many in the village and some from further away. **Quiz starts at 8pm**. If you and your team wish to guarantee a table it is sometimes advisable to arrive a little earlier. Teams are up to 6 people, entry £2 per person. First prize, £36 in pub vouchers. Losers are awarded a wooden spoon. Our next two quiz nights are **Saturday 28 October** and **Saturday 25 November**. All profits from the quiz and raffle go to our charity of the year, **Samaritans of Ipswich and East Suffolk**.

Christmas Raffle

For the first time ever we are holding a Christmas Raffle for our charity of the year Samaritans of Ipswich and East Suffolk. We have already had prize donations from Adnams and Lacons breweries, the Co-op and Tesco's, plus a local wine merchant. The Case will also be donating some prizes. **We will be selling raffle tickets from early October** – just ask at the bar. The draw will take place on **Sunday 24 December**. More details closer to the time.

Street Food Vendors

This year we have successfully introduced monthly street food vendors, which has been very popular with many of our customers. In October we are hosting for the first time **Sweeney's Pizzeria** who will be bringing their best **traditional wood fired** Italian Neapolitan pizzas. They are so good, in October they are taking part in the finals for the Best Pizza awards, staged by Qualita Italiana. They will be with us on **Saturday 14 October** from 4.30pm – 8pm. To place your order contact Sweeney's via their website <http://www.sweeneyspizzeria.online/order> or use their Facebook page – Sweeney's Pizzeria and follow the links. As before, food can be eaten in the pub from 6pm. Families are welcome. Customers have asked if they can bring their own cutlery and yes of course you can. We provide extra serviettes and place mats if needed. In December one of your favourites **Suffolk Spiced Fusion** will be with us again on **Saturday 2 December**. If you have a favourite street food vendor that we haven't tried please let us know as we are now looking to book dates for 2024.

Cask Marque and Good Beer Guide

As many of you will know the pub has been a member of Cask Marque since we reopened and have regularly passed our 6 monthly beer inspection with flying colours. Cask Marque is a quality control and accreditation organization operated in the UK by an independent, non-profit body



called the Cask Marque Trust (CMT). Their inspection procedure now includes Cellar and Bar Area Hygiene and Glass Ware. Last month the pub was inspected for the first time under the new audit format. The cellar volunteers received an hours training regarding cellar and beer line hygiene before the inspection and passed with the top marks '5 – Excellent'. Even before the training the Cask Marque inspector (who is new to the pub) congratulated the team on how clean and tidy the cellar and bar areas were and the pub as a whole. Well done to the cleaning volunteers too! He then carried out a cask beer audit, as we have had before. Again we passed with 100% grading for our beers. Well done to all those involved in keeping our casks (and kegs) in tip-top condition. **STOP PRESS! – We have just been informed that yet again we have been included in CAMRA's 2024 edition of their annual Good Beer Guide. Hooray!**

New Art Exhibition

In mid September we started exhibiting a new selection of local art work. It is a mixed exhibition by members of **Art for Fun, Capel**. The work is a mixture of watercolours, acrylics and water colour pencils. All the artists are local to the area and have produced some great work for our walls. If you are interested in joining the group, they meet in St Mary's Church hall, Capel St Mary, every Monday morning during term time. If in the future you would like to show your art work or photography we would be pleased to include it in one of our exhibitions. All work must be framed (except canvases) and be able to be wall hung. Contact chair@thecasepubbentley.co.uk for further information.

10th Anniversary Celebrations

We are still interested to hear from you regarding our 10th anniversary celebrations, next year. If you have any ideas on how we could mark this achievement please speak to someone behind the bar or contact the chair on the email address above. A spring cask ale weekend and a children's party have already been mentioned!

Bin End Sale - Wines

We are currently updating our range of wines and have a number of red and white wines which we will be selling by the bottle for almost cost price. Please see the notices behind the bar or ask the volunteers which wines are included.

Email News

If you would like to hear from us from time to time regarding our forth coming events or mobile food vendors please email chair@thecasepubbentley.co.uk with your details and we will add you to our mailing list.

Opening Hours

We are always being asked why we are no longer open week day lunch times and Sunday evenings. We would really like to open more hours but unfortunately due to previous commitments many of our volunteers can not cover these hours. If you would **like the pub to open more often** please consider bar volunteering. Full training is given and no one is expected to cover the bar until they are completely confident with all the routines and procedures. We also have openings for volunteering for gardening, maintenance, cleaning and decorating. If you are interested please pop into the pub and pick up a volunteers form.

We hope to see you soon.

BENTLEY PARISH COUNCIL

Bentley Parish Council Meeting took place at Bentley Village Hall at 7.30pm on Thursday 7 September 2023.

Seven Councillors, County Councillor Georgia Hall, Tree Warden and 23 members of the public attended the meeting.

There were fewer items on the agenda because of the length of the Public Session.

Warm wishes and thanks were sent to our Footpath Warden and District Councillor Dave Busby who both have serious health issues. We look forward to seeing them back as soon as possible.

Planning – Four planning decisions were received.

Landowner and 7 residents commented on the Planning applications.

Councillors recommended refusal on Two Planning applications - Land East of Capel Road and The Brockley Wood Gravel site.

Reports were received from County Councillor Georgia Hall, Tree Warden and Speedwatch Co-Ordinator.

Matters discussed:

- Firework display – CANCELLED this year due to illness.
- Quarterly Accounts 2023/24 were accepted.
- Purchase of a round wreath from Royal British Legion (£100) was agreed
- Bentley Bowls were awarded an additional grant of £500 towards their recent purchase of a lawnmower.
- Request for help with cost of repairs to School Fence – Capel Road was discussed.
- Hedges encroaching onto footpaths - See Parish Council notice in this edition.

The meeting closed at 9.21 p.m. Full draft minutes are available on the P C website - <http://bentleysuffolkparishcouncil.gov.uk/>



BENTLEY PARISH COUNCIL

DOG FOULING

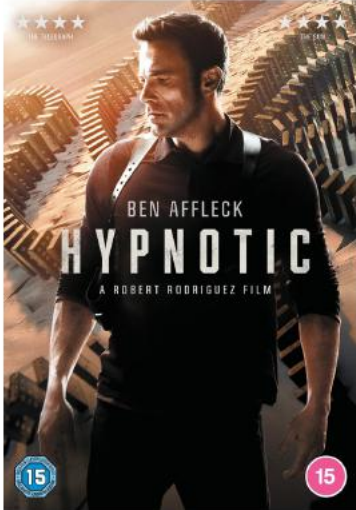


Please pick up after your dog

Complaints are still being received regarding dog fouling on the Village Playing Field. **Please pick up after your dog and use one of the dog bins or put it in your own black bin if the bins are full - Babergh incinerate all black bin contents**

CAPEL ST MARY LIBRARY

The Friends of Capel Library Community Cinema



Tuesday 17th October 2023 at Capel Library

Doors Open: 7pm, film Starts: 7.30pm

Tickets in advance: £4.50 members, £5 non-members

On the door: £5.50

Fully Licensed Bar & Air Conditioning

**SUFFOLK
LIBRARIES**

Our Cinema evening in August showed the very funny and moving film Champions and was enjoyed by a lovely audience of 40 plus people. Our film for September was Plane, sadly the numbers were low with attendance being just 20 and this does mean that we did not cover our costs.

Just to remind all our Friends of Capel Library to spread the word regarding our cinema nights. As mentioned, before we will conduct an audit in the new year to look at the viability of this event in the longer term. To those of you who are regular attendees your support is very much appreciated.

October's film on 17th October is **Hypnotic** starring Ben Affleck... determined to find his missing daughter, Detective Danny Rourke finds himself spiralling down a rabbit hole while investigating a series of reality-bending crimes. Aided by Diana Cruz, a gifted psychic, Rourke simultaneously pursues and is pursued by a lethal spectre, the one man he believes holds the key to finding the girl.

November's film on 21st November is **The Outfit** starring Mark Rylance... The Outfit, a gripping and masterful thriller in which an expert tailor (Academy Award winner Mark Rylance) must outwit a dangerous group of mobsters in order to survive a fateful night.

The Friends of Capel Library Community Cinema



Tuesday 21st November 2023 at Capel Library

Doors Open: 7pm, film Starts: 7.30pm

Tickets in advance: £4.50 members, £5 non-members

On the door: £5.50

Fully Licensed Bar & Air Conditioning

**SUFFOLK
LIBRARIES**

Annual Quiz Night

Our annual quiz night will be taking place on **Saturday 28th October 2023**, with the usual ploughman's, raffle and licensed bar. Application forms are available at the library. Please get your application in early.

Sunday is Family Craft Day

Our Sunday crafts are enjoyed by many children. If you haven't popped along, please do. It is completely free, and everyone is welcome. There is a different craft every **Sunday, 10.30am - 12.30pm** and as said before its free, so why wouldn't you.

Summer Reading Challenge

A BIG well done to all those children who completed the challenge, and we hope the finishers enjoyed their 'magic after party' on the **23rd September**, which is sponsored by The Friends of Capel Library.

We would like to pass on a massive THANK YOU to all our volunteers as without you the reading challenge would not be the success it is.

If you have yet to collect your certificate and medal, please do pop along to the library and speak with a member of staff.

Home Library Service

Do you or someone you know struggle to get to the library? We have volunteers ready and waiting who can bring the books to you. Just give us a call at the library and we can discuss how the service can benefit you, a friend, neighbour or loved one.

Regular Events in the Library:

- **Tot Rock & Stay & Play:** Thursdays during term time 9.30 onwards; songs, and stories followed by a more social play session with free refreshments.
- **Minecraft:** Children of all ages welcome and those under eight must be accompanied by an adult. Please bring with you your tablet or phone equipped with Minecraft Pocket Edition or Minecraft Windows 10 Edition. Try to remember to charge your device beforehand! Contact the library for more details.
- **Lego:** Every 4th Saturday we hold our Monthly Lego Club. It is £1.50 per child which includes a drink and a biscuit. Each month has a theme, but you can also build what you like. At the end of the session a prize is given to the most creative build, as voted for by fellow creators. So, join us 10.30-12.00 for some building fun.
- **Sunday Crafts** is every week from 10.30 to 12.30. All children & families welcome, no booking is required and there is no charge. Come and get crafty at Capel Library.

Don't forget we sell cards, stamps and book tokens.

LIBRARY OPENING TIMES

Monday: Closed
Tuesday: 9am-12.30 & 2.00pm-5.30pm
Wednesday: 9am-12.30
Thursday: 9am-12.30
Friday: 2.00pm-5.30pm
Saturday: 9.00am-3.00pm
Sunday: 10.00am-3.00pm

Telephone: 01473 311699

e-mail: capel.library@suffolklibraries.co.uk

Web: www.suffolklibraries.co.uk

SUFFOLK MOBILE LIBRARY

Suffolk mobile library will be stopping at Bentley Village Hall
from 1.30-2.15 pm
on the following Wednesdays
25th October, 22nd November and 20th December

THE FRIENDS OF CAPEL LIBRARY

The Friends of Capel Library 100 Club

August draw

£25 John Wheals
£10 Janet Fenton
£ 5 Melody Ellis
£ 5 Lillian Calvert

September draw

£25 Mark Alder
£10 Linda Morrison
£ 5 Graham Phillips
£ 5 Sue Edwards

Prizes can be collected from the Library. Thank you for your support. **Bob Perkin**



The Scrabble Club meets on the second and fourth Thursday of each month at 2.30 pm in the Village Hall Committee Room.

If you would like a gentle game of Scrabble, a cup of tea or coffee and a chat please come along and join us.

Dates of the meetings are shown on the Bugle diary page. **Robin Owen**

“AMEN”

CHRISTMAS SHOEBOX APPEAL 2023

'AMEN ' is the name of a Christian Charity who are asking for support with their Christmas Family Shoeboxes Appeal for 2023. AMEN is a registered charity, more information can be found on their website. www.amentrust.co.uk or on Facebook.

These boxes are given to very poor communities in Romania, the emphasis being on the family and therefore should include something for Mum, Dad and children. All boxes will be delivered by volunteers direct to families in time for Christmas and will bring much joy and happiness. So can you help please?

My name is Doreen Savage, the local co-ordinator. I have leaflets that contain ideas for things you can include in your boxes, can obtain boxes and deliver to you and will happily collect filled ones **before November 4th** or they can be left at my home. Delphis, Station Road, Bentley. Mobile 07784787596 or doreen.savage2545@btinternet.com

Please contact me for any further details, Many thanks.

! OVERGROWN HEDGEROWS !

Bentley Parish Council respectfully reminds parishioners to check that their hedgerows and plants are not, inadvertently, obstructing or impeding pedestrian access along public footways. Council asks that any such growth is cut back in order to avoid any unintentional accident or injury to pedestrians, cyclists or motor vehicles.

It would also be appreciated if parishioners could check the width of their hedge to make sure it is not obstructing the footway. Mobility Scooters are finding it difficult in some areas to use narrow pavements. Residents should ensure that their hedges are sufficiently cut back to allow the full width of the footway to be available to pedestrians.

If any parishioner is aware of a particular problem site, please notify the Clerk in order that appropriate action may be taken.

Mrs J Scott, Clerk – Bentley Parish Council

Telephone: 01206 298174

e- mail: clerk@bentleysuffolkparishcouncil.gov.uk

BENTLEY REFORMED BAPTIST CHURCH

Seek ye the LORD while he may be found, call ye upon him while he is near: (Isaiah 55 v 6)

Many of us like the sunshine, and we enjoyed some very sunny days in September. The Bible, poetically, describes the sun as being "as a bridegroom coming out of his chamber" (Psalm 19v5)

This reminds us that the Lord Jesus Christ (who is called the "Sun of righteousness" (Malachi 4v2)) is the Bridegroom, and His Church, those people who believe and trust in Him, are His bride. Jesus loves His bride so much that He suffered, bled and died for her, that she may be presented perfect and beautiful to God, clothed in the garments of Christ's own righteousness.

We would be delighted to see you at one of our services, where you will hear more about this heavenly Bridegroom. Be assured of our continued prayers for the people of Bentley.

Weekly Services

Prayer and Bible Study – Tuesdays 7pm

Worship Services – Sundays 10.45am and 3pm

For further information (or for a FREE Bible (King James version)), please do get in touch:

Tel. Admin: 07814 465222 www.bentley-reformed-baptist.uk

e-mail: admin@bentley-reformed-baptist.uk

Or find us on Facebook.

FOOTPATH SOCIETY

To avoid a clash with the coffee morning for Macmillan Nurses, the walk on the **30th September will start at 3.00 pm** from the Village Hall.

Other walks are:-

Saturday October 21st at 2.30 pm

Saturday November 18th at 10.30 am.

Both from the Village Hall

ALSO New Year's Day 11 am from "The Case"

Happy Walking - Be prepared.

John Wheals. 01473 310569.



Essex & Suffolk **PEST SOLUTIONS**

**Your local pest control experts for
home and business**

- Free advice, fast response
- Highly accredited (NPTA)
- Fully qualified and insured
- Discreet – unmarked vans

Email: info@eandspestsolutions.co.uk

T: 01473 328092

M: 07720 429999



Essex & Suffolk **PEST SOLUTIONS**

Altered Image

Manu Appointed Salon

Capel Road, Bentley, Suffolk - 01473 311781



L'ORÉAL

Appointed salon

Special rates for senior citizens on
Tuesdays and Wednesdays

Now offering Sports massage
by appointment only

For face & body care

There's a face and body treatment to suit you!
Just give us a call to discuss your
personal requirements.

We also have a chiropodist at the studio on Fridays

Opening hours:

Tuesday – Saturday 9am - 5pm



STUART'S HANDYMAN SERVICES

CALL: 0 7 5 3 2 26 29 30

stuart.handyman.services123@gmail.com

QUOTE REF. **HANDYMAN** FOR 10% DISCOUNT !

PLUMBING FULLY QUALIFIED

- ✓ LEAKY TAPS
Repaired and Replaced
- ✓ TOILETS
Repaired and Replaced
- ✓ SHOWER ENCLOSURES
- ✓ SHOWER TRAYS
- ✓ SHOWERS
Repaired and Replaced
- ✓ KITCHEN SINKS
- ✓ WATER SOFTENERS
Fitted
- ✓ RADIATORS
Removed / Replaced
- ✓ RADIATOR VALVES
Replaced
- ✓ TILING
- ✓ FLOOR & WALLS
- ✓ BATHROOMS
- ✓ EN - SUITES

CARPENTRY FULLY QUALIFIED

- ✓ DOORS Fitted Inside & Out
- ✓ DOOR LOCKS Fitted and
Replaced
- ✓ ARCHITRAVE Fitted
- ✓ SKIRTING Fitted
- ✓ STUD WALLS
- ✓ LAMINATE & HARDWOOD
FLOORING
- ✓ PLASTER BOARDING
- ✓ INSULATED PLASTER
BOARDING
- ✓ DOORS & WINDOWS
Insulated
- ✓ WOODEN DOORS & WINDOWS
Repaired
- ✓ FLAT PACK FURNITURE
- ✓ SHELVING
- ✓ DECKING
Repaired and Replaced

PAINTING FULLY QUALIFIED

- ✓ HAND PAINTED KITCHENS
- ✓ HAND PAINTED FURNITURE
- ✓ INTERIOR PAINTING:
Bedrooms
Living Rooms
Bathrooms
Kitchens
Hallways/Stairs & Landings
- ✓ EXTERIOR PAINTING:
House Painting
Fence Painting
Shed Painting
- ✓ WOODEN WINDOWS Painted
- ✓ WOODEN DOORS Painted
- ✓ WOODEN CONSERVATORIES
Painted
- ✓ ADVANCED RESIN REPAIRS
To Timber

PLEASE SUPPORT YOUR LOCAL TRADERS

Citizens Advice Column

I need a new car for work, but I can't afford to buy a new one, so I've been looking at second-hand options. I've heard so many horror stories about people buying cars that turn out to be faulty. I'm worried that I won't know what to check, especially as I know very little about cars. How can I make sure I don't buy a dud car?



For many people, buying a car is a major purchase and whether it's new or second-hand, the process can seem daunting and complicated. But don't worry, there's lots of information on the steps to take when buying a car and what you can do afterwards if something goes wrong on the Citizens Advice website, www.citizensadvice.org.uk

First of all, where are you going to buy the car? If you're buying from a trader, choose a trustworthy one with an established name with a good reputation. Ideally, they will be part of a trade association or follow the industry's code of practice.

If you're buying via an auction, this is much riskier as you'll have fewer legal protections like the right to returns or refunds so carefully read the terms and conditions before you bid.

If you buy from a private seller, there's a few extra steps to take. For instance, try to inspect the car at their home address so if something goes wrong later, you have a record of that.

Make sure the car's details are correct by using the DVLA's free online vehicle information checker, www.gov.uk/get-vehicle-information-from-dvla

You'll need the registration number, MOT test number, mileage and make/model of the car to do this check. Also, check the car's MOT history for free on www.gov.uk

Keep a copy of both these results (take a screenshot or download the information) as well as the original advert or description of the car. You might also consider getting a private history check to see if the car's been reported stolen, still has money owing on it, or has been in a serious crash. This will cost about £20.

Before buying a car, it's good to check if it meets emissions standards as it could mean paying extra charges when driving through London's ULEZ or clean air zones across the UK.

Inspecting the car is crucial before buying. Ideally, do this during the day when it's not raining (scratches are harder to see on a wet car) and take it for a test drive for at least 15 minutes and on different types of roads, if possible. Check you have the appropriate insurance for a test drive (either your own or the seller's policy might cover you).

Once you've decided on a car, don't be afraid to negotiate on the price. If you take out a loan or finance to buy it, make sure you can afford the repayments over the lifetime of the contract. If you pay with cash, you will have fewer protections than other options like debit.

Often, despite doing all these checks, you might find something wrong with the car after you've bought it. You may have a legal right to a repair, the cost of a repair or some money back but it's on a case-by-case basis and some examples might be the car's mileage is wrong or the car keeps breaking down.

For more information, check out the Citizens Advice website www.citizensadvice.org.uk or call its consumer helpline on 0808 223 1133.



Memories of Summer - Hummingbird Hawk Moth on Buddleia - Photo by John Boyle

High Cutz Tree & Garden Care

Tree

- Removal
- Reduction
- Crown Lift
- Thinning
- Pollarding
- Coppicing
- Planting
- Tree Reports
- Woodland Management

**Fully Qualified and Insured with
Waste Removed Responsibly**

Contact For Free Quote:

➤ 01473 787356

➤ 07748101463

➤ Danielmeacock1@Hotmail.co.uk

Garden

- Grass Cutting
- Hedge Cutting
- Hedge Removal
- Hedge Reduction
- Shrub Pruning
- General Garden Maintenance
- Weed Spraying
- Contracts
- Estate Contracts

LOCAL TRADE DIRECTORY

Please mention The Bentley Bugle when responding to Adverts

Bacon Farm Trust
Bentley, IP9
**Storage containers &
light ind. units to rent**
Flexible terms
Tel: 07836 731821
01473 310682
info@cabacon.co.uk

Collins

waste solutions...for a better environment

**For all your Skip Hire
& Aggregate needs,
call Collins today!**



Telephone:

01473 327596

Collins Skiphire, Folly Farm, Tattingstone

Advertise your business with a colour, half page spread for only £40 per issue and reach every house in Bentley

Contact Peter Day

Tel: 01473 310518

Email: peter.d47@hotmail.co.uk



Deben Shutters

www.debenshutters.uk



Installed
in just 6-8
weeks



CALL TODAY TO ARRANGE A FREE DESIGN VISIT

07977 007 574 | hello@debenshutters.uk

Angel Cottage, Capel Road, Bentley, IP9 2DW

PLEASE SUPPORT YOUR LOCAL TRADERS